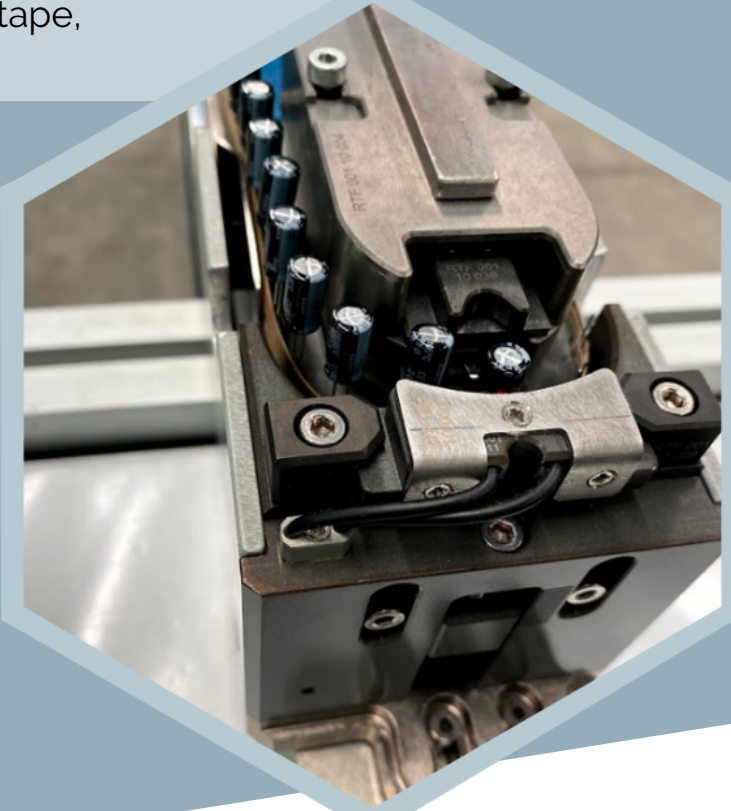
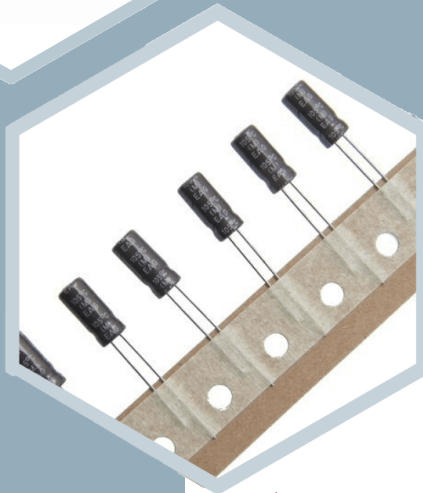
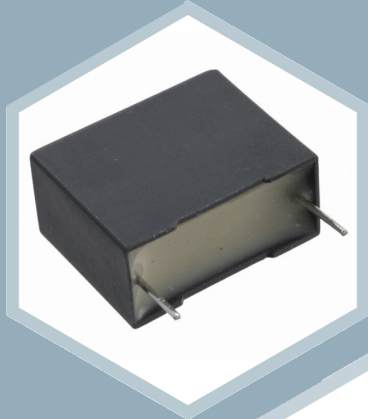




AS RADIAL FEEDER

AS RF80 & RF120

AS RF : for radial leaded components on tape,
packaged in ammo pack or reel

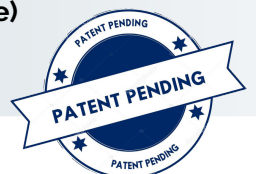


GENERAL CONCEPT

- ▶ Uses the same reliable basis of all SEMO feeders
- ▶ Simple and robust mechanical systems
- ▶ Easily reconfigurable to a wide range of radial components
- ▶ Standard serial bidirectional FFI communication with Siplace
- ▶ Optional remote feeder handset for easy monitoring, diagnosis and configuring.
- ▶ Narrow Design for an optimized footprint on the placement machine.

Only from SEMO : Z-REF

Systematic mechanical Z-referencing of each component before cutting. Repeatable and accurate height of the component leads (+/-50um regardless of the component tolerance)



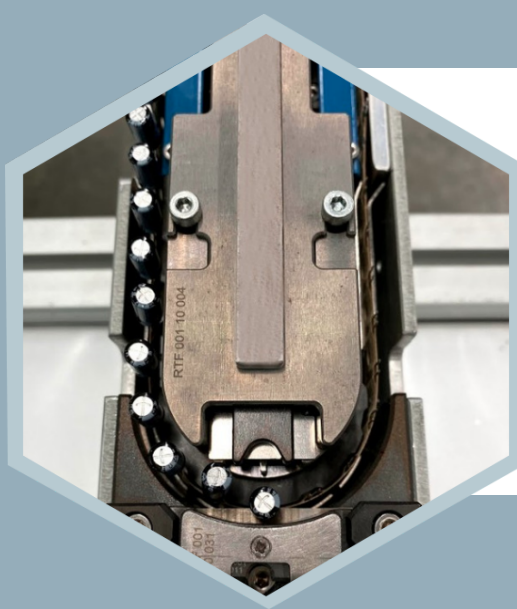
Width: 80 mm (7 tracks on X table)
or
120 mm (11 tracks on x table)

Dimensions : 700 mm x 1320 mm

Weight: 21 kg

Power supply : 110/240 Vac - 50/60 Hz

Air supply : 5 / 7 bar



Integration on ASM SIPLACE

- ▶ Directly on an X table with X feeder adapter+ our SEMO interface
- ▶ Directly on a modified S table

AS RF80 and RF120 can communicate with the SIPLACE machine or be autonomous out of production for tests or maintenance

Technical specification

RF 80

Component range	
Component types	capacitors, varistors, transistors, resistors, inductors, etc.
Lead pitch	from, 2,0mm to 15 mm
Distance transport hole	max 50 mm to upper edge of component
Max component dimensions in mm	Cylinder : D=12,5 Rectangle : W=13
Lead diameter	max 1 mm round, oval or square
Cutting height	1,5 mm minimum from bottom of body
Component tape	
Tape packages	reels or ammo packs
Feed hole pitch	adjustable to 12,7 mm (0,5 inch) or 15 mm (0,59 inch) simple/double/triple pitch
Tape height	17,5 mm -19 mm
Distance transport hole cutting edge	adjustable from 11 mm to 22 mm +/- 0,2mm
Empty tape disposal	empty tape transport to the backside of the feeder
Splicing	ability to splice
Applicable tape standard	IEC 60286-2:2015
Performance	
Cycle time per component	0,8s - 2,5 s/component
Cutting height repeatability with z-ref option	+/- 50um with reference to component
Standard	CE
Reel changeover	< 2mn
Footprint of ASM xtable	7 tracks
HMI Interface	
Status indication	flashing LED
Human management	reset button
Pitch Adjustment	two buttons and two switch
Option	
Referencing in z axis	z-ref fonction for 50 um repeatability
Communication to machine	serial bidirectional FFI with ProSiplace
High-end HMI	remote feeder handset
Management of disposed tape	grinding and disposal drawer (capacity of 1 full reel of paper)
Cleaningness	vaccun and filtering at cutting
Tape end detection	tape end (ammo) and tape change (reel) detection
Cut angle	45°, 60°
Energy connection	electrical/Pneumatic connections plate
Storage and mobility	trolley with or without drawers
Component weight support	mobile crutch

RF 120

Component range	
Component types	capacitors, varistors, transistors, resistors, inductors, etc.
Lead pitch	from, 2,0mm to 15 mm
Distance transport hole	max 50 mm to upper edge of component
Max component dimensions in mm	Cylinder : D=20 Rectangle : W=26
Lead diameter	max 1 mm round, oval or square
Cutting height	2 mm minimum from bottom of body
Component tape	
Tape packages	reels or ammo packs
Feed hole pitch	adjustable to 12,7 mm (0,5 inch) or 15 mm (0,59 inch) simple/double/triple pitch
Tape height	17,5 mm -19 mm
Distance transport hole cutting edge	adjustable from 11 mm to 22 mm +/- 0,2mm
Empty tape disposal	empty tape transport to the backside of the feeder
Splicing	ability to splice
Applicable tape standard	IEC 60286-2:2015
Performance	
Cycle time per component	0,8s - 2,5 s/component
Cutting height repeatability with z-ref option	+/- 50um with reference to component
Standard	CE
Reel changeover	< 2mn
Footprint of ASM xtable	11 tracks
HMI Interface	
Status indication	flashing LED
Human management	reset button
Pitch Adjustment	two buttons and two switch
Option	
Referencing in z axis	z-ref fonction for 50 um repeatability
Communication to machine	serial bidirectional FFI with ProSiplace
High-end HMI	remote feeder handset
Management of disposed tape	grinding and disposal drawer (capacity of 1 full reel of paper)
Cleaningness	vaccun and filtering at cutting
Tape end detection	tape end (ammo) and tape change (reel) detection
Cut angle	45°, 60°
Energy connection	electrical/Pneumatic connections plate
Storage and mobility	trolley with or without drawers
Component weight support	mobile crutch

Remote feeder handset

Portable HMI that can be plugged to other SEMO feeders :

- ▶ Diagnosis for maintenance or problem solving
- ▶ Feeder feedback
- ▶ Manual testing