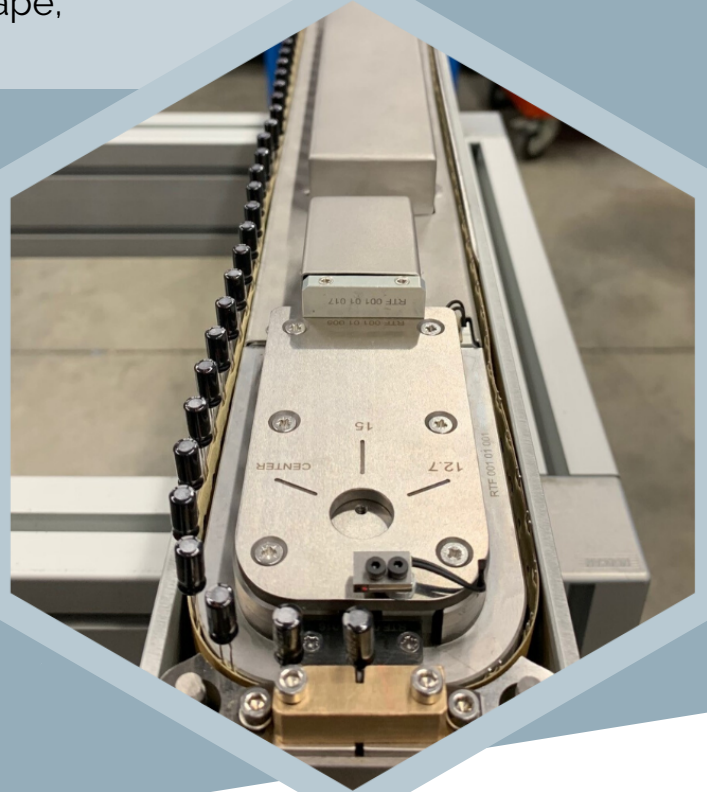
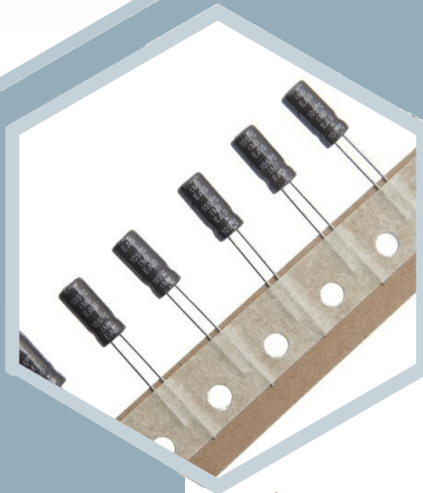
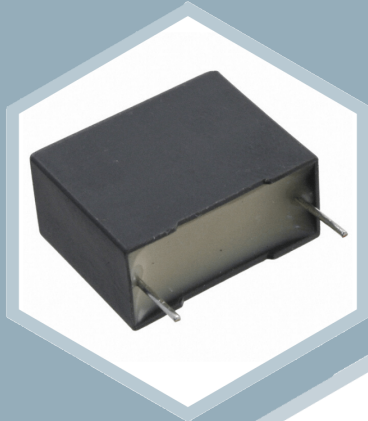




AS RADIAL FEEDER

AS RF80

AS RF : for radial leaded components on tape,
packaged in ammo pack or reel



Width: 80 mm (7 tracks on X table)

Dimensions : 580 mm x 1320 mm

Weight: 21 kg

Power supply : 110/240 Vac - 50/60 Hz

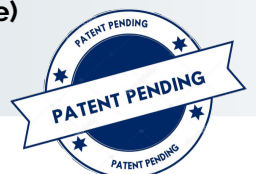
Air supply : 5 / 7 bar

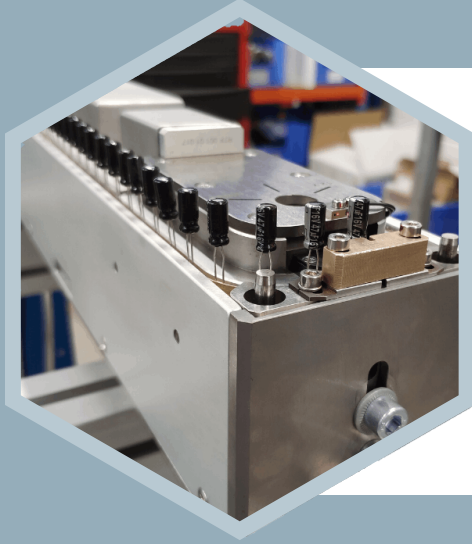
GENERAL CONCEPT

- ▶ Uses the same reliable basis of all SEMO feeders
- ▶ Simple and robust mechanical systems
- ▶ Easily reconfigurable to a wide range of radial components
- ▶ Standard serial bidirectional FFI communication with Siplace
- ▶ Optional remote feeder handset for easy monitoring, diagnosis and configuring.
- ▶ Narrow Design for an optimized footprint on the placement machine.

Only from SEMO : Z-REF

Systematic mechanical Z-referencing of each component before cutting. Repeatable and accurate height of the component leads (+/-50um regardless of the component tolerance)





Integration on ASM SIPLACE

- ▶ Directly on an X table with X feeder adaptater + our SEMO interface
- ▶ Directly on a modified S table

AS RF80 can communicate with the SIPLACE machine or be autonomous out of production for tests or maintenance

Technical specification

Component range	
Component types	capacitors, varistors, transistors, resistors, inductors, etc
Lead distance	from 2,0mm to 15 mm
Distance transport hole	max 45 mm to upper edge of component
Component diameter	3mm to 12,5 mm
Lead diameter	max 1mm round , oval or square
Component tape	
Tape packages	reels (up to 550mm diameter) or ammo packs (280x450x78mm)
Feed hole pitch	adjustable to 12,7 mm (0.5 inch) or 15 mm (0.59 inch)
Tape height	17,5mm -19 mm
Distance transport hole cutting edge	adjustable from 11mm to 22mm +/- 0,2 mm
Empty tape disposal	empty tape transport to the backside of the feeder
Splicing	ability to splice
Applicable tape standard	IEC 60286-2:2015
Performance	
Cycle time per component	0,8s -2,5 s/component
Pick position repeatability	+/- 50um + product tolerance
Cutting height repeatability with z-ref option	+/- 50um with reference to component
Standard	CE
Reel changeover	< 2mn
HMI Interface	
Status indication	flashing LED
Human management	reset button
Options	
Communication to machine	Serial bidirectional FFI with ProSiplace
High-end HMI	Remote feeder handset
Management of disposed tape	Grinding and disposal drawer (capacity of 1 full reel of paper)
Cleaningness	Vaccum and filtering at cutting
Tape end detection	Tape end (ammo) and tape change (reel) detection
Cut angle	45°, 60°
Energy connection	Electrical/Pneumatic connections plate
Storage and mobility	Trolley with or without drawers
Component weight support	Mobile crutch

Remote feeder handset

Portable HMI that can be plugged to other SEMO feeders :

- ▶ Access settings for component changing
- ▶ Diagnosis for maintenance or problem solving
- ▶ Feeder feedback
- ▶ Manual testing

For optimal value for money, the RF feeder can be factory set and programed for one single component. In this case, remote feeder handset is not mandatory. If and when multiple components are planned to be integrated, the handset can then be added.

