

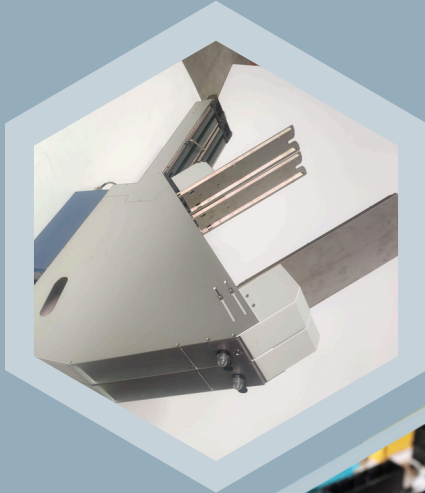


cadence

TF60 & TF80

TUBE FEEDER

TF : for components (connectors, relays, capacitor holders...) packaged in plastic sticks)



New : multitrack feeder

Width : 60 mm or 80 mm

Length : 1320 mm (810 outside table)

Weight : 24 kg

Power supply : 110/220 Vac - 50/60 Hz

Air supply : 5 / 7 bar

GENERAL CONCEPT

- ▶ Reliable and stable for highest OEE
- ▶ Simple mechanical systems
- ▶ Close to zero maintenance and easy integration
- ▶ Removable from the change-over table

DID YOU KNOW ?



What to do when your component is discontinued ?

SEMO Feeders can be recycled

We can reconfigure to new components, test, upgrade and provide the new full warranty: **a new life for your feeder and some savings for you**



semo



INTEGRATION FOR MULTIPLE MANUFACTURERS

- Possible integration with many pick-and-place machines
- SEMO feeders can communicate with pick-and-place machines or can function manually for tests and maintenance

CHARACTERISTICS

- ▶ **Automatic startup with cycle time** < 2s
- ▶ **Lengths of sticks** : 500 mm to 600 mm maximum
- ▶ **Gravity system** : sticks tilted to 45°
- ▶ **Number of sticks depends on the sticks height** : storage stick height 250 mm
- ▶ **Sticks replenishment** without stopping production
- ▶ **Repeatability of positioning** : < 0.1mm
- ▶ **SEMO Tube Feeder can be mounted on a changeover table every 60 or 80 mm**
- ▶ **Optional communication for optimal synchronization with pick and place machine**
- ▶ **A mobile crutch supports the feeders weight once mounted on a placement machine**
- ▶ **Reconfigurable** if you need to convert your feeder to another component

ACCESSORIES

Trolley :

- ▶ To handle feeders
- ▶ Electrical/Pneumatic connections plate
- ▶ Storage box with four drawers
- ▶ Additionnal storage interface



+33 5 61 85 55 77
semo@semo.fr
10 rue Louis Breguet,
31700 Cornebarrieu, FRANCE



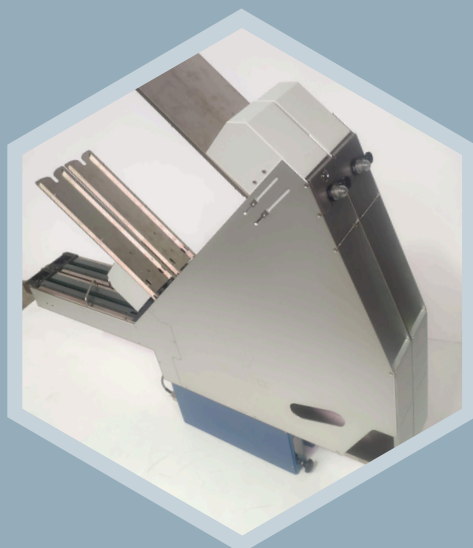


cadence

TF60 & TF80

TUBE FEEDER

**TF60 and TF80 : for components
(connectors, relays, capacitor holders...)
packaged into plastic sticks**



New = multi-track version



Width : 60 or 80 mm

Length : 1320 mm (810 out table)

Weight : 22 kg

Power supply : 110/240 Vac -
50/60 Hz

Air supply : 5 / 7 bar

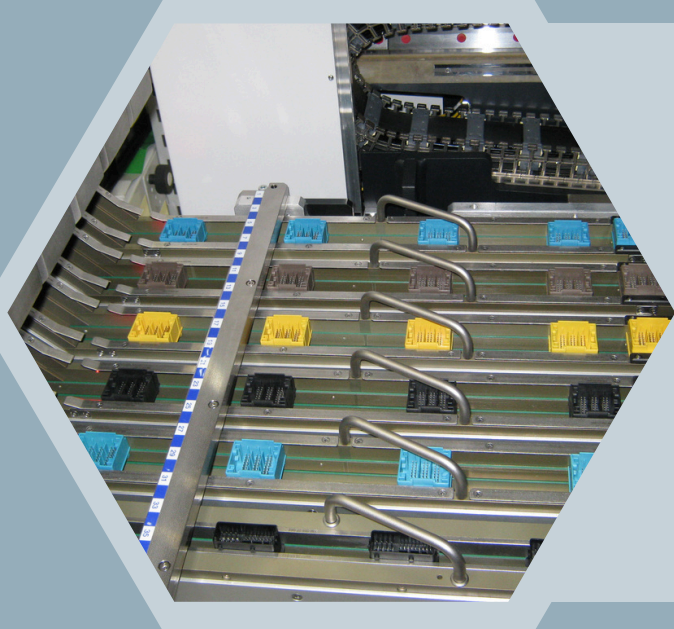
GENERAL CONCEPT

- ▶ Reliable and stable feeding of very narrow parts for the highest OEE
- ▶ Shortest stick feeder on the market
- ▶ Simple mechanical systems
- ▶ Close to zero maintenance and easy integration

DID YOU KNOW ?



**THIS FEEDER COMES WITH UNIQUE SMARTFEEDER FEATURES WITH
BLUETOOTH COMMUNICATION (READ MORE OVER LEAF)**



INTEGRATION FOR MULTIPLE MANUFACTURERS

- Possible integration with many pick-and-place machines
- Semo feeders can communicate with pick-and-place machines or can function manually for tests and maintenance.

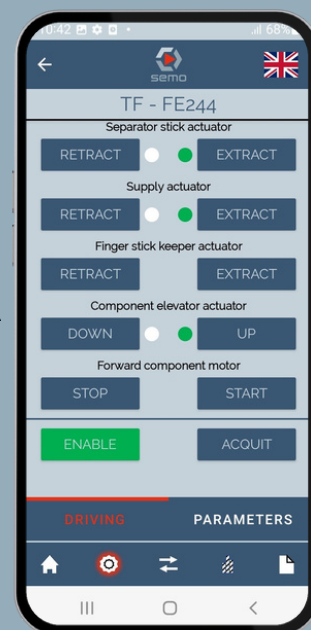
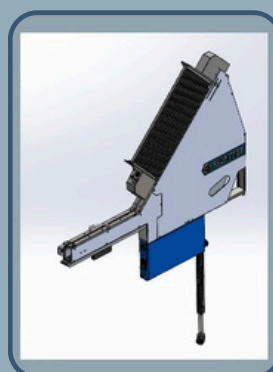
CHARACTERISTICS

- ▶ Automatic startup with cycle time < 2s
- ▶ Lengths of sticks : 500 mm to 600 mm maximum
- ▶ Number of sticks : 4
- ▶ Stick replenishment without stopping production
- ▶ Repeatability of positioning : < 0.1 mm
- ▶ Semo tube Feeder can be mounted on a changeover
- ▶ Optional communication for optimal synchronization with pick and place machine
- ▶ A mobile crutch supports the feeders weight once mounted on a placement machine
- ▶ Reconfigurable if you need to convert your feeder to another component
- ▶ Easy maintenance
- ▶ Pilotage via smartphone

SMARTFEEDER

Bluetooth communication with a mobile terminal =

- ▶ Settings at your fingertips
- ▶ Realtime access to documentation
- ▶ Easy and fast troubleshooting



+33 5 61 85 55 77
semo@semo.fr
 10 rue Louis Breguet,
 31700 Cornebarrieu, FRANCE

